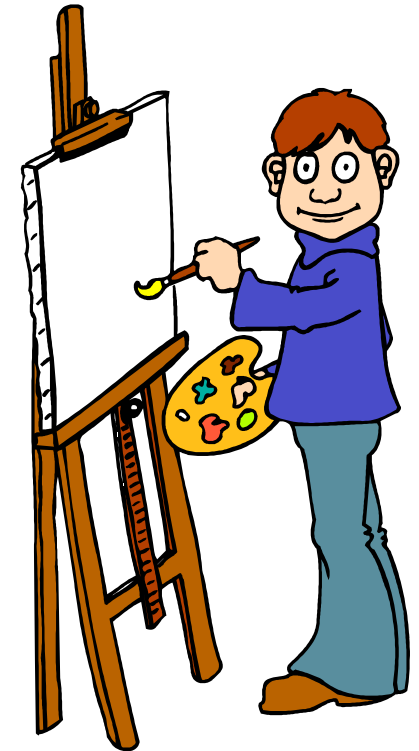


# CSW Cyber Art Show

## Call for Entries



### Important Dates

Show Opens Jan 5, 2010

Entry Deadline Oct 20, 2009

ARTGALLY.COM

CSW Cyber Art Show

**Tel: 330-772-1120**

CSW Cyber Art Show is an all media on line juried show with prizes and cash awards in the hundreds. This will be the 13th annual exhibition and the 16th show.

We will be announcing all of the contributions on the website. You can read all about it on the CSW Cyber Art Show website

<http://artgally.com/cswart> Please stop by the online show and visit. If there are any questions please feel free to write

### Contact Information

[artgally@artgally.com](mailto:artgally@artgally.com) put art show in the subject line.

Tele: 330-772-1120

For online entries please visit the website for complete details.

Sponsorship Director: Linda Rappach

Please contact Linda for donation questions

Email [LindaJRap@msn.com](mailto:LindaJRap@msn.com)

Tele: 330-720-2886

Phone: 330-772-1120

Email [artgally@artgally.com](mailto:artgally@artgally.com)

Web Url:

<http://www.artgally.com/cswart>

Mail to: Sandra Woods  
4253 Bushnell-Campbell Rd  
Fowler, Oh 44418

Name: \_\_\_\_\_  
Web Url \_\_\_\_\_  
Address \_\_\_\_\_  
City \_\_\_\_\_ State \_\_\_\_\_ Zip \_\_\_\_\_  
Tel: \_\_\_\_\_ Signature \_\_\_\_\_  
No. 1 Title \_\_\_\_\_ Med: \_\_\_\_\_ Price \_\_\_\_\_ Size \_\_\_\_\_  
No. 2 Title \_\_\_\_\_ Med: \_\_\_\_\_ Price \_\_\_\_\_ Size \_\_\_\_\_

*Juror*  
*Elaine Angel Gomer*

There will be several guest artists and a junior artist also. To be named on the website.

<http://www.artgally.com/cswart>

Winners announced on the website.

Winners will be contacted shortly after show opening.

There will be a **special Artgally website award** to an artist without a website. So please list that info on your entry form.

Artists not qualifying for the show will have one piece in the **Back Room**. All artists in the show and back room, will be considered for the Artgally Website Award.

**To find out how to become a member of International Showcase of Art Professionals, (I.S.A.P) Please visit <http://www.isap-usa.com>**

Sandra L Woods  
4253 Bushnell-Campbell Rd.  
Fowler, Oh 44418

Entries Must be postmarked by Oct 20, 2009

**Entry Rules**

2 dimensional art only  
All media art show No Photography  
Artist must be 18 or older by Oct 20, 2009

**Image Requirements:**

jpeg format by email or cd by snail mail.  
Submit: 1-2 images in jpeg, format Size should be approximately 800 pixels by 600 pixels or close. (If you have a problem with that we can resize if necessary ) Resolution of image should be at least 100dpi (can be larger but no smaller resolution) No artist signature should appear on the image

**Entries fees and CD mail to:**

Sandy Woods/CSW Enterprises  
4253 Bushnell-Campbell Rd  
Fowler, Ohio 44418

**Entry Fees** Up to two images  
**\$25.00** non members of International Showcase of Art Professionals (I.S.A.P)  
**\$20.00** for members of I.S.A.P  
Entries should be accompanied with all criteria of the artwork, i.e. title, size, price, med. You may use this entry form or the printable on website.

<http://www.artgally.com/cswart>

**EMAIL Instructions** Send To:  
**artgall@artgally.com** then mail the following: entry fees/along with the printable form to: Sandy Woods/CSW Enterprises 4253 Bushnell-Campbell Rd Fowler, Ohio 44418 Entry fees may be paid by check or paid on line by pay pal . If you pay the fee on line just indicate this on the entry form and mail the entry form to address listed.

**Hope to see you in the Show**